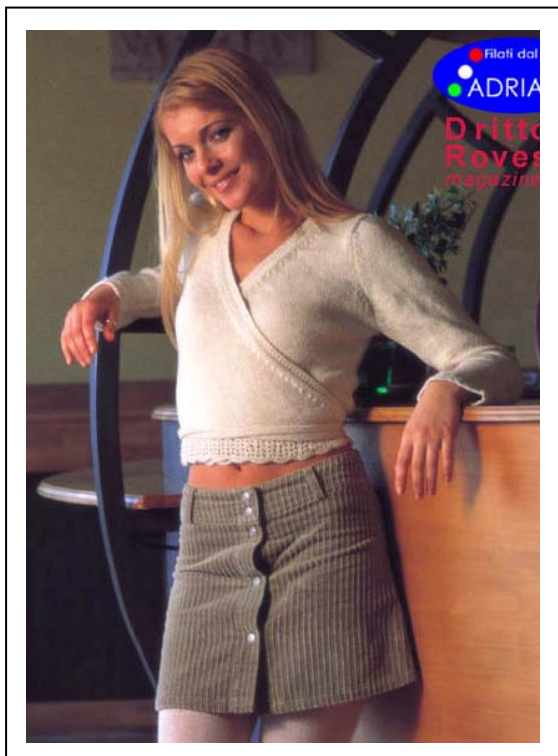


The “Creamy” Bed Jacket



Selman's Creative Craft

UK	S	M	L
Chest	80	(84)	88 cm

Adriafil Yarn - “ **Sierra Andina** ”

350g Cream shade No. 30

Knitting needles 3½ mm

Crochet Hook 3 mm

Tapestry Needle

Tension – 24 sts and 31 rows = 10cm square in stocking stitch using 3½ mm needles.

Abbreviations :

rem	remaining	beg	beginning
k	knit	dec	decrease
p	purl	st (s)	stitch (es)
inc	increase	cm	centimetres
ch	chain	tr	treble
		dc	double crochet

Pattern stitches:

Stocking stitch

Fancy rib stitch over odd stitches

Row 1 * k1, p1 *. Rep. from * to *, k1

Row 2: k2, * 1 double st (= work in k1 sliding the right needle into the st. of the row below), k1 *. Rep. from * to *, k1

Row 3: k1, * 1 double stitch, k1 *. Rep. from * to * Repeat row 3.

Chain stitch

Single crochet

Double crochet

Treble crochet

Back:

With needles 3½ mm cast on 90 (94-98) sts and work in st st increasing on each side 1 st. every 20 rows 2 times. When work measures 22 (23-24) cm., to shape armholes dec., in the 2 edge stitches, every 2 rows, 2 sts. 4 times, 1 st. When work measures 16 (17-18) cm from beg. of armholes, to shape the shoulders cast off on each side, every 2 rows, 8 sts. 2 times, 7 sts. Cast off all rem. sts.

Right Front:

With needles 3½ mm cast on 90 (94-98) sts and work in stock stitch to shape the side, on ws of work, in same way as back. At the same time, for the neckline dec., rightwise, in the 4 edge stitches 2 sts. every other 2 and every other 4 rows for a total of 29 (31-33) times. At the same time, to shape neckline and the shoulder slant, on ws of work, work in same way as back.

Left Front:

Work to match right front.

Sleeves:

With needles 3½ mm cast on 58 (62-64) sts and work in stock stitch. Inc 1 st on each side every 10 rows 13 times. When work measures 41 (42-43) cm., to shape armholes dec. on each side, in the 2 edge stitches, 2 sts every other 4 and every other 6 rows for a total of 11 times, then cast off, every 2 rows, 4 sts. 2 times, 5 (6- 7) sts Cast off the remaining stitches.

Buttoning Edge:

With 3½ mm needles cast on 9 sts and work in fancy rib stitch for 115 (117-119) cm;
Cast off the sts.

Laces:

With 3½ mm needles cast on 23 sts and work in stock stitch for 95 cm.; cast off the sts.
Make two identical laces.

Finishing:

Join shoulder seams. Fit and sew in the sleeves.

Join side seams leaving an opening of 3 cm. at 2 cm from the bottom (for the laces).

Join the buttoning edge along the front pieces and the back neckline.

Finish the bottom of the back and of the front pieces with the crochet hook as follows:

Row 1: * in the same st. work in 1 tr. 2 ch. and 1 tr. skip 3 base sts. *, rep. from * to *; end
with 1 tr. 2 ch. and 1 tr. in the last st.

Rows 2 - 5: 1 tr. in each space of 2 ch. work in 1 tr. 2 ch. and 1 tr. end with 1 tr. in the last st.

Break off and bind the yarn

Finish the edges of the border as follows: start from a side edge hooking the yarn at the end of the edge worked in fancy rib st; end at the opposite edge (buttoning side):

Row 1: 1 dc. in the 1st tr., * 6 tr. in the space of the next 2 ch., 1 dc. in the space of the
next 2 ch. *, rep. from * to *; term. working the dc. in the last tr.

Break off and bind the yarn

Finish the bottom of the sleeves in the same way, working only the first 2 rows and ending with a
loop; end with a row of dc. working 3 sts in the space of 2 ch. and 1 st. between 1 tr. and the other.

Fix the laces on ws of work, at the base of the buttoning border in fancy rib stitch.

